



7V—2 QT. BAKER/BEAN POT—6.00
7V/W—BAKER/W WARMER, SET—11.00



7FL—10" PLATE—3.50
7F—9" PLATE—2.50
7G—7" PLATE—2.00
7E—5" SAUCER—1.50



7D—2 QT. PITCHER—6.00



7W—3 QT. BAKER/BEAN POT—8.00
7W/W—BAKER/W WARMER, SET—13.00



7B—SUGAR WITH LID—3.00



7A—6 OZ. CREAMER—2.00

7AB—CREAM & SUGAR SET—5.00



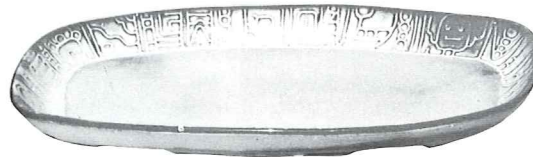
7C—CUP—2.50



7M—14 OZ. MUG—3.00



7H—SALT & PEPPER—3.00



7QS—13" STEAK PLATTER (SHALLOW PLATTER)—3.50



7XO—8 OZ. FRUIT—1.50



7K—BUTTER DISH—4.00



7Q—13" DEEP PLATTER—6.00



C4—12 OZ. COFFEE MUG—2.50



7X—14 OZ. CHILI-SOUP—2.00



7PS—9" TRAY—2.50



7XL—20 OZ. SALAD—2.50



7FC—15" CHOP PLATE—15.00



7N—1 QT. VEGETABLE BOWL—3.00



7T—6 CUP TEAPOT—6.00



7TP—17" AZTEC OVAL PLATTER—12.50



7J—2 CUP TEAPOT—4.00

THIS PAGE AVAILABLE IN PRAIRIE GREEN, DESERT GOLD, AND WHITE SAND.

SIZES ARE APPROXIMATE AND MAY VARY SLIGHTLY.